

# **LA COLINA 18**

---

NUEVA ANDALUCÍA, MARBELLA



### **STUNNING TOWNHOUSE WITH INCREDIBLE MOUNTAIN AND SEA VIEWS**

Nestled within the enclave of La Colina in Nueva Andalucia, La Colina 18 beckons with its unrivalled blend of luxury and location. Set against the backdrop of La Concha mountain, this townhouse offers incredible mountain and sea views.

**Beds:** 4 | **Baths:** 3+2 | **Plot:** 174m<sup>2</sup> | **Built:** 267m<sup>2</sup> | **Parking:** 1 | **Orientation:** S/E



From the moment you step inside, incredible views greet you from every angle, with natural sunlight also bathing the interiors in natural light throughout the day.

With generous terraces, there's no shortage of space for alfresco dining or simply unwinding amidst the beauty of the surroundings.

The outdoor BBQ area is perfect for hosting friends and family, while direct terrace access from the ground level seamlessly merges indoor and outdoor living.





Inside, modern design meets meticulous attention to detail, with an exquisite entrance hall leading to a stunning staircase that connects the levels. The interior palette is both tasteful and contemporary, complemented by high-end furnishings that exude comfort and style.







The bespoke kitchen, equipped with top-of-the-line appliances, is a culinary haven for aspiring chefs and gourmet enthusiasts alike.





The master bedroom is a sanctuary, boasting a captivating design, ample storage space and a lavish ensuite bathroom. Deep tones and sumptuous materials lend a contemporary flair, while the solarium provides a tranquil retreat for soaking in the scenery and entertaining guests.





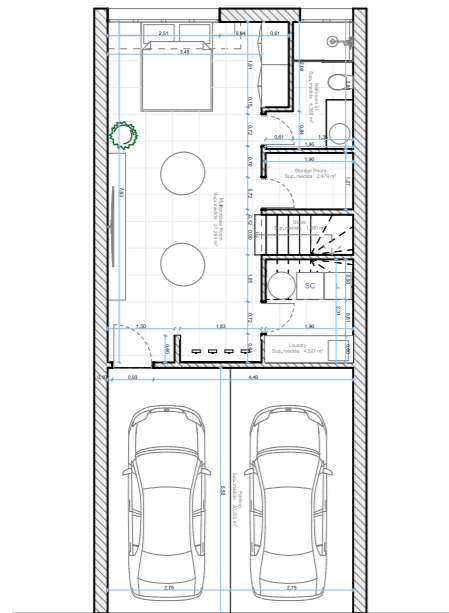




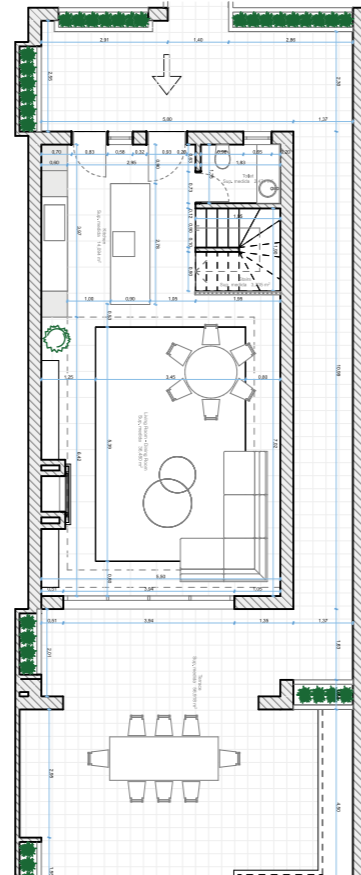


With incredible views and a prime location in Nueva Andalucia, La Colina 18 offers a lifestyle of sophistication and convenience. Its location also allows for convenient access to a plethora of nearby amenities, international schools and world-renowned golf courses.

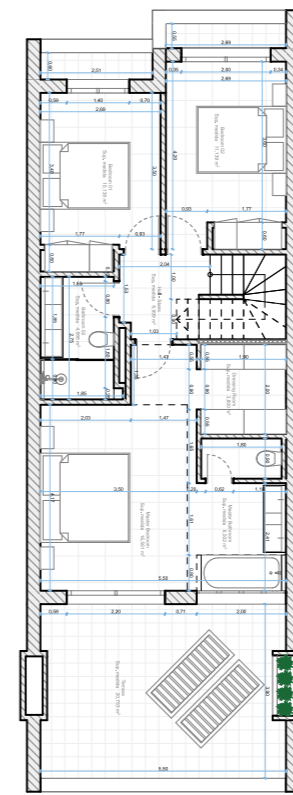
**LOWER LEVEL**



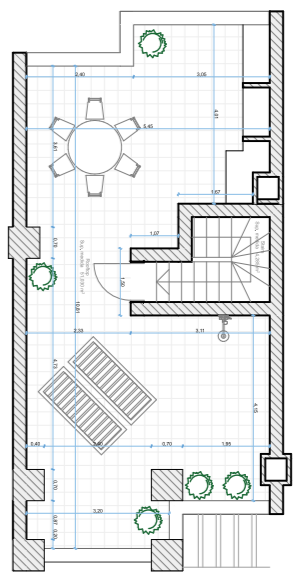
**GROUND LEVEL**



**UPPER LEVEL**



**SOLARIUM**



**Beds: 4 | Baths: 3+2 | Plot: 174m<sup>2</sup> | Built: 267m<sup>2</sup> | Parking: 1 | Orientation: S/E**





**lacolina18.es**